

# **USB2.0 ATSC&NTSC TV STICK USER'S MANUAL**

---

## **Part 1 Product Instruction**

Thank you for choosing USB 2.0 ATSC&NTSC TV Stick! The TV Stick adopts the latest digital audio-video multimedia processing chipset and analog TV system tuner, supports ATSC HDTV signal receiving. With AV/S terminal input port, it's capable of watching video of TV/Video Tape/VCD/DVD/Video Camera through PC. It's built-in multinomial digital audio-video upgrading technology, with high anti-interfere ability, and the chroma is vivid. It is fully compatible with USB2.0 HI-SPEED and Plug & Play standard, easy to install and use. The shape is delicate for carrying on conveniently. The shell is made of thick aluminum alloy materials, with anti-deformation, anti-fall, wear-resisting characteristics. Using the product, you can capture and record video of ATSC&NTSC TV, which makes your computer a multimedia audio-video center. Enjoy your new digital audio-video life!

# USB2.0 ATSC&NTSC TV STICK USER'S MANUAL

---

## 1.1 Features

- ◆ HI-SPEED USB2.0 port, Plug & Play
- ◆ Powered via USB without adaptor device
- ◆ Watch ATSC&QAM TV program or Analog (NTSC) TV program and listen to radio on your PC
- ◆ Support up to 1920x1080(HDTV)
- ◆ Dolby Digital AC3 Audio Output
- ◆ Additional AV/S-Video input for connecting other video sources. (Such as DVD Player/ VCD/ VHS/ Camcorder)
- ◆ Support Time-Shift and scheduled recording function
- ◆ Support EPG (Electronic Program Guide)/Subtitle/Teletext
- ◆ Capture analog and digital images in JPEG format

# USB2.0 ATSC&NTSC TV STICK USER'S MANUAL

---

## 1.2 Product Specification

- ◆ Support Windows XP / Vista /Windows 7
- ◆ Window / full-screen show
- ◆ Reach 30 frames per second with the resolution 720x480 (NTSC DVD) reach 25 frames per second with the resolution 720x576 (PAL DVD)
- ◆ Support 8-VSB & QAM demodulation (ATSC)
- ◆ Support Real Time Digital Video Recording (DVR)
- ◆ Support USB2.0 (Hi-Speed) standard, Plug-and-Play
- ◆ Support overlay show
- ◆ Support video-background function
- ◆ Maximum Power:2.5W

# USB2.0 ATSC&NTSC TV STICK USER'S MANUAL

---

## Part 2 System Requirements

Basic allocation	Recommended allocation
CPU P4 1.7G	P4 2.0G or higher
RAM 128M	RAM 256M or higher
VGA Card 32M Memory	VGA Card, 64Memory or higher
Windows XP	Windows XP/Vista/Windows 7
Directx9.0	Directx9.0C

## Part 3 Driver installation

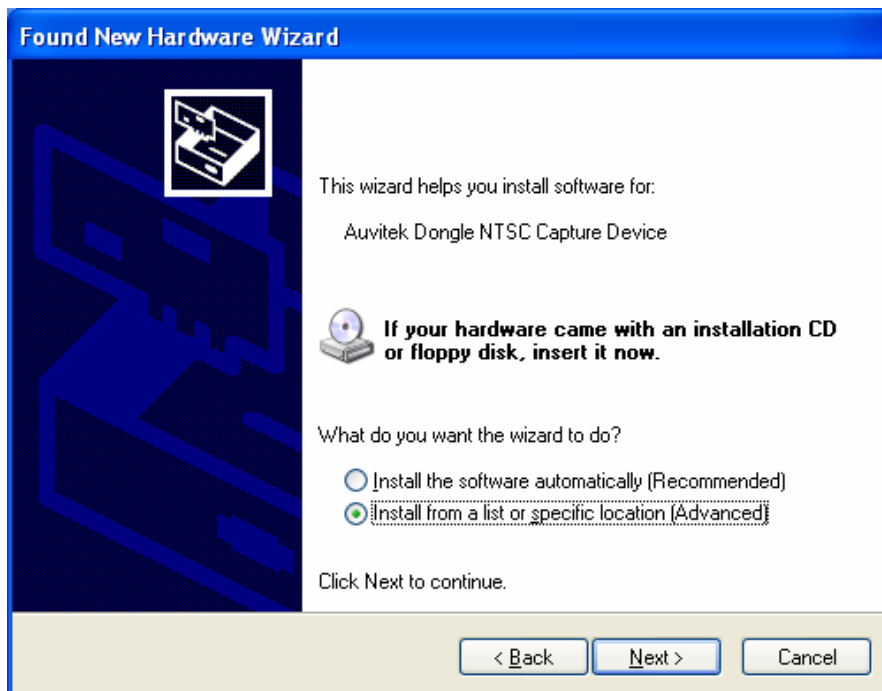
- Before the Driver installed, please insert the CD into CD-ROM and connect the USB TV Stick to your PC. When the following window appears, please choose “No, not this time” and click “Next”:

# USB2.0 ATSC&NTSC TV STICK USER'S MANUAL

---



- When the following window appears, please choose the second option and click “Next”



# USB2.0 ATSC&NTSC TV STICK USER'S MANUAL

- Then choose the path of driver in CD, and click “Next”: (For example: If OS is Windows 32bit XP, choose XP32 folder in driver. If OS is Windows 64bit Vista, choose Vista64 folder in driver.)



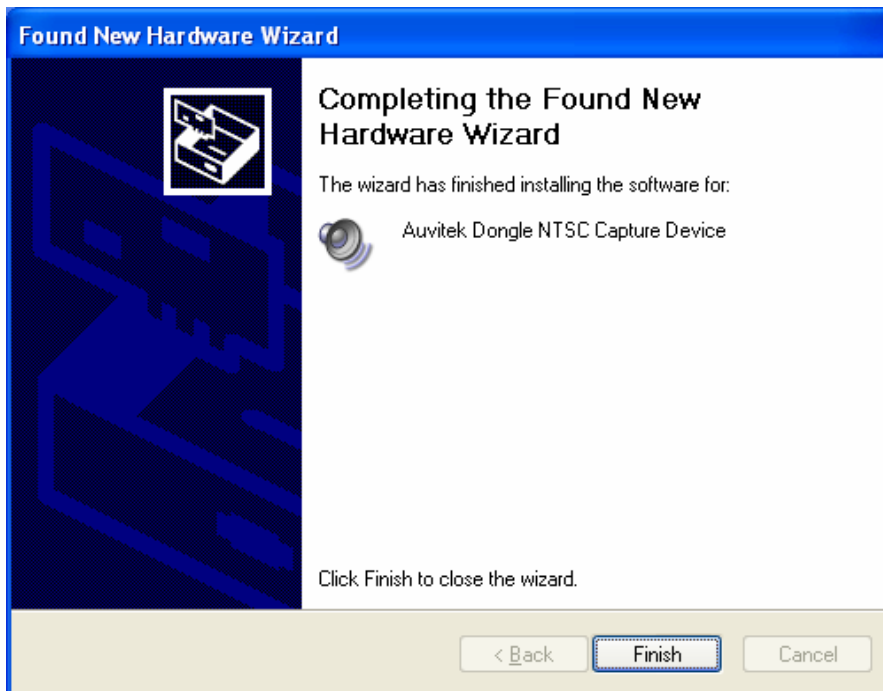
- Window will prompt the following dialogue box, please click “Continue Anyway”:



# USB2.0 ATSC&NTSC TV STICK USER'S MANUAL

---

- Please click “Finish”:

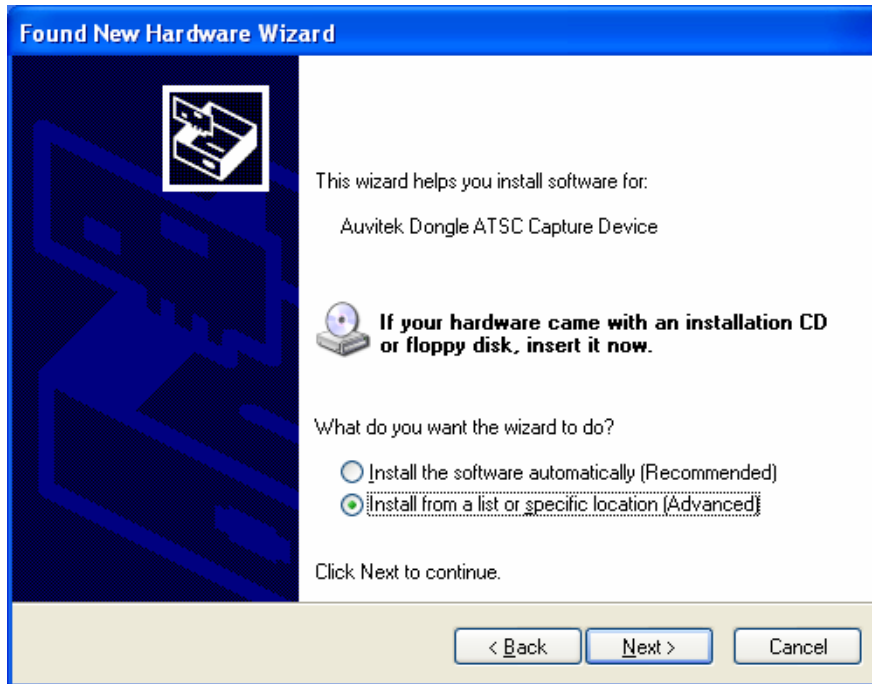


- Then windows will prompt the following window, please choose “No, not this time” and click “Next”:



# USB2.0 ATSC&NTSC TV STICK USER'S MANUAL

- Please choose the second option and click “Next”



- Then choose the path of driver in CD, and click “Next”:(The same path as the first installation)





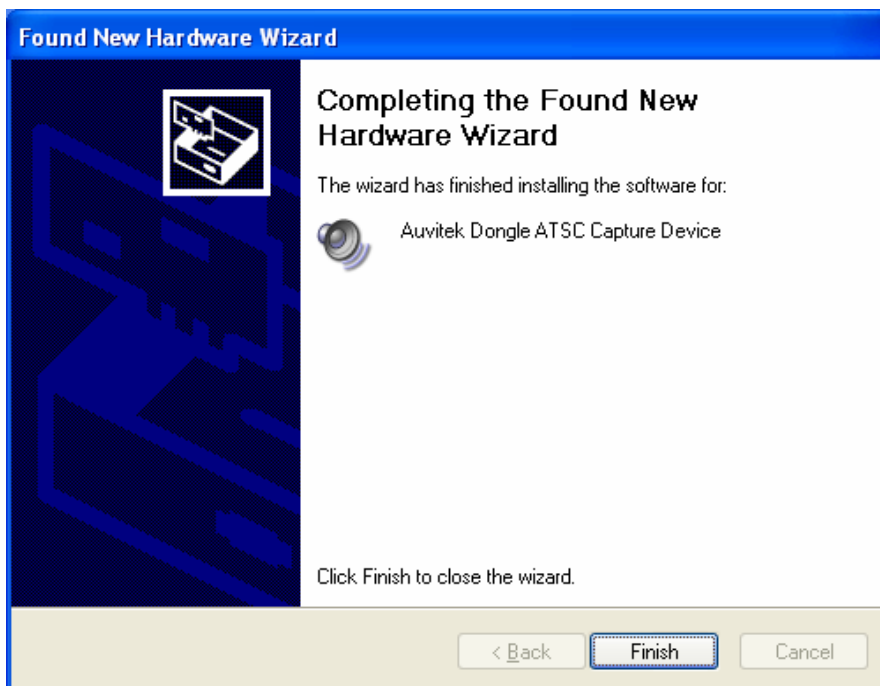
# USB2.0 ATSC&NTSC TV STICK USER'S MANUAL

---

- Please click “Continue Anyway”:



- Please click “Finish”. The driver installation is finished.

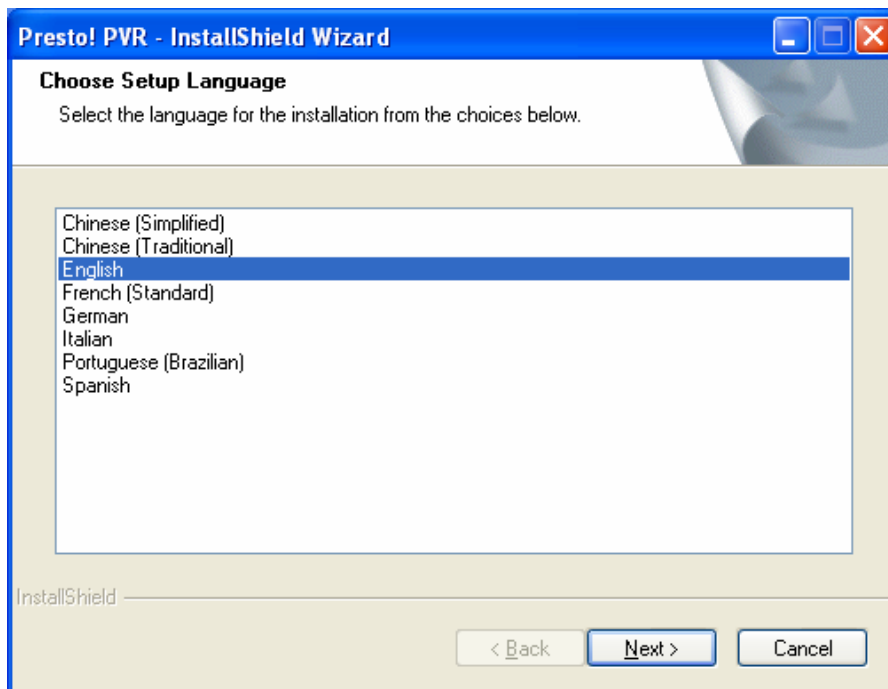


# USB2.0 ATSC&NTSC TV STICK USER'S MANUAL

---

## Part 4 Application installation

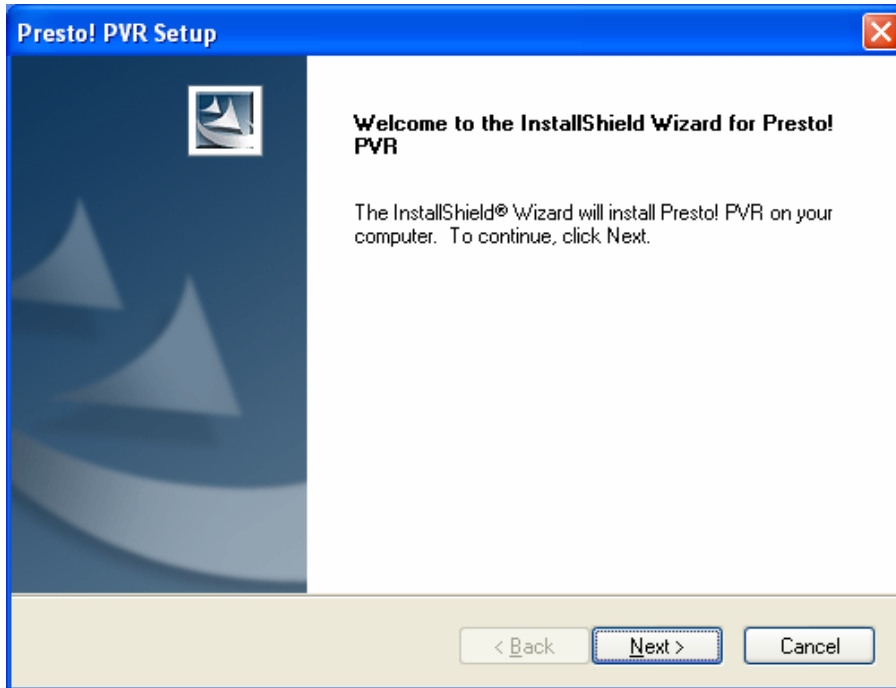
- Click “Setup.exe” file under the Application list in the CD, when the following window appears, select the language and click “Next”:



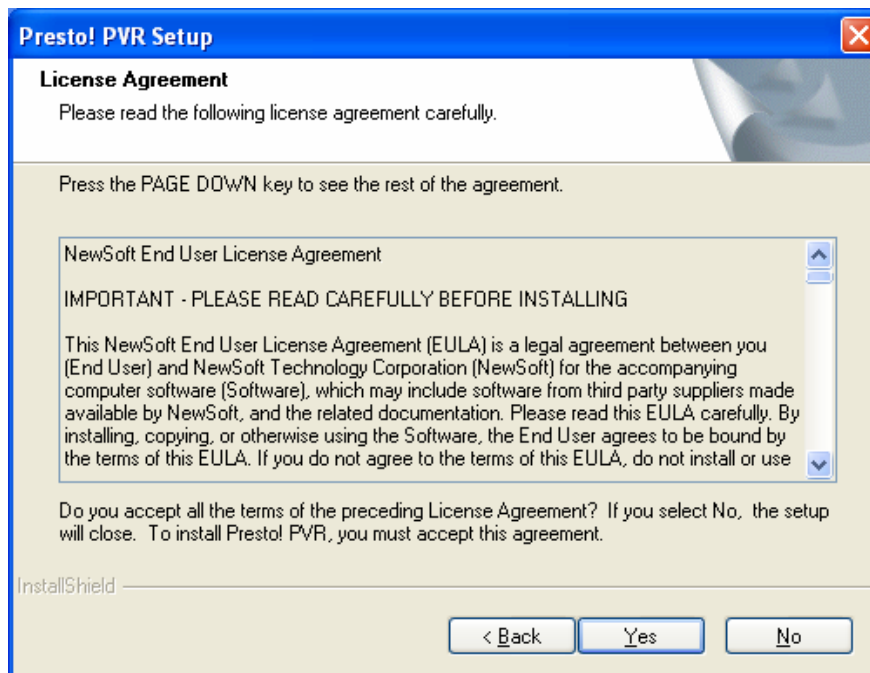
# USB2.0 ATSC&NTSC TV STICK USER'S MANUAL

---

- When the following window appears, please click “Next”:



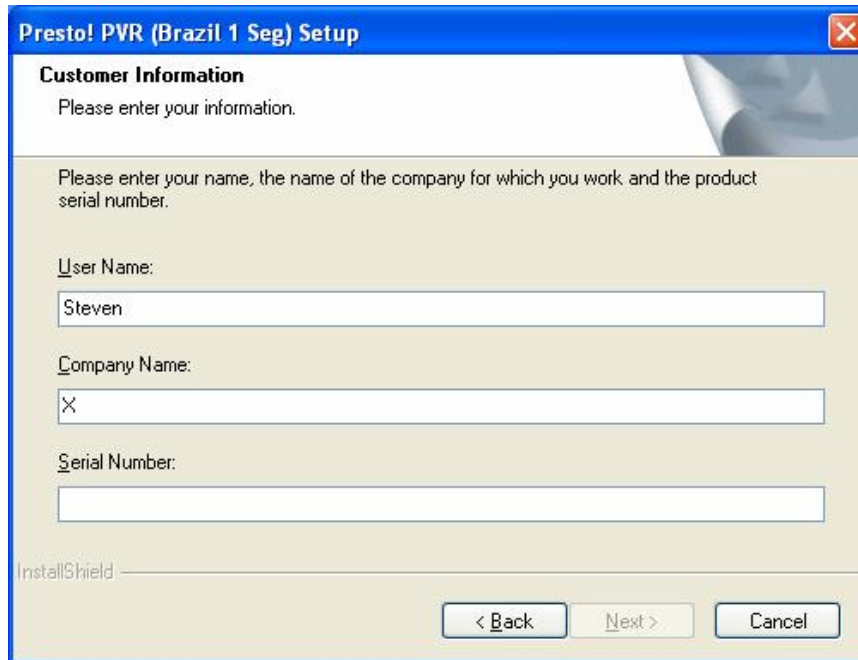
- Please click “Yes”:



# USB2.0 ATSC&NTSC TV STICK USER'S MANUAL

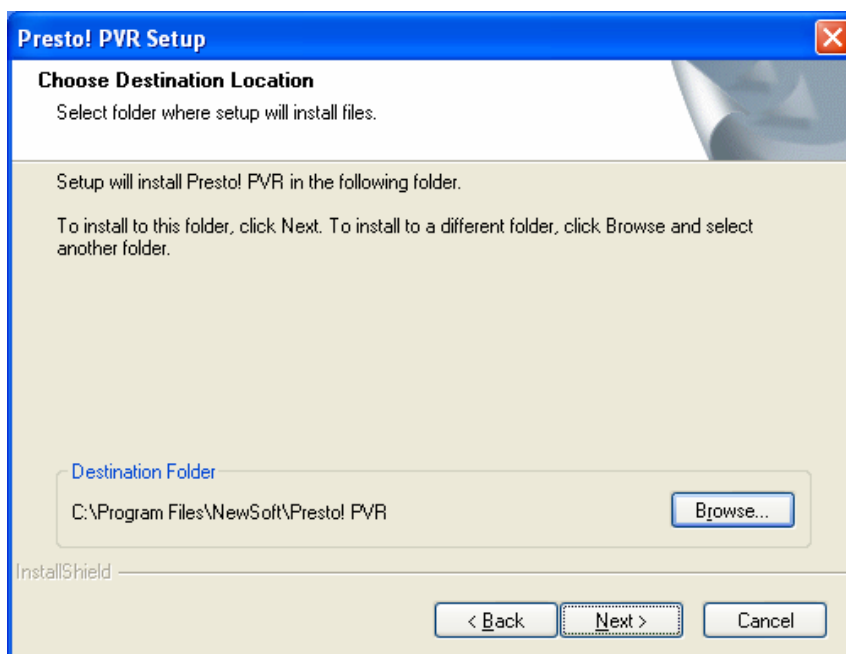
---

- Enter Serial Number and click “Next”:



The screenshot shows a Windows-style dialog box titled "Presto! PVR (Brazil 1 Seg) Setup". The window has a blue title bar with a close button (X) on the right. The main content area is titled "Customer Information" and contains the following text: "Please enter your information." and "Please enter your name, the name of the company for which you work and the product serial number." Below this text are three input fields: "User Name:" with the text "Steven", "Company Name:" with a single character "X", and "Serial Number:" which is currently empty. At the bottom of the window, there are three buttons: "< Back", "Next >", and "Cancel". The "InstallShield" logo is visible in the bottom left corner.

- Choose the path to install (default as system disk C:\Program Files\NewSoft\Presto! PVR), click “Next”:

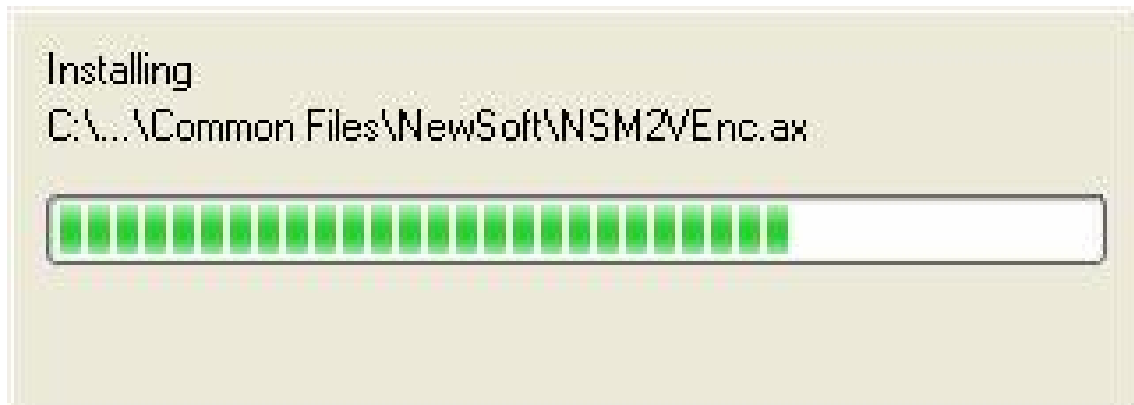
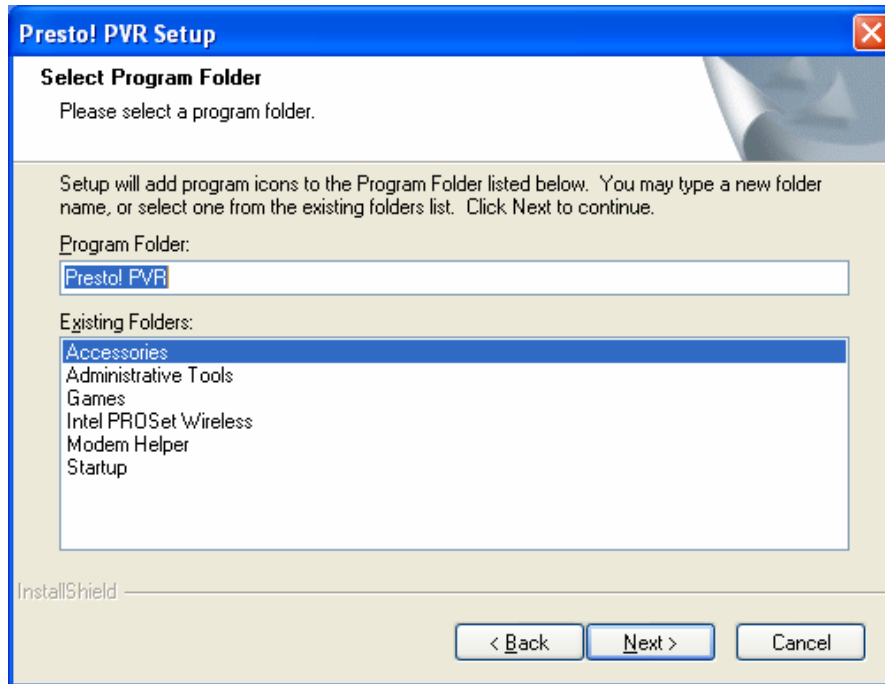


The screenshot shows a Windows-style dialog box titled "Presto! PVR Setup". The window has a blue title bar with a close button (X) on the right. The main content area is titled "Choose Destination Location" and contains the following text: "Select folder where setup will install files." and "Setup will install Presto! PVR in the following folder." Below this text is a paragraph: "To install to this folder, click Next. To install to a different folder, click Browse and select another folder." Below the text is a text box labeled "Destination Folder" containing the path "C:\Program Files\NewSoft\Presto! PVR". To the right of the text box is a "Browse..." button. At the bottom of the window, there are three buttons: "< Back", "Next >", and "Cancel". The "InstallShield" logo is visible in the bottom left corner.

# USB2.0 ATSC&NTSC TV STICK USER'S MANUAL

---

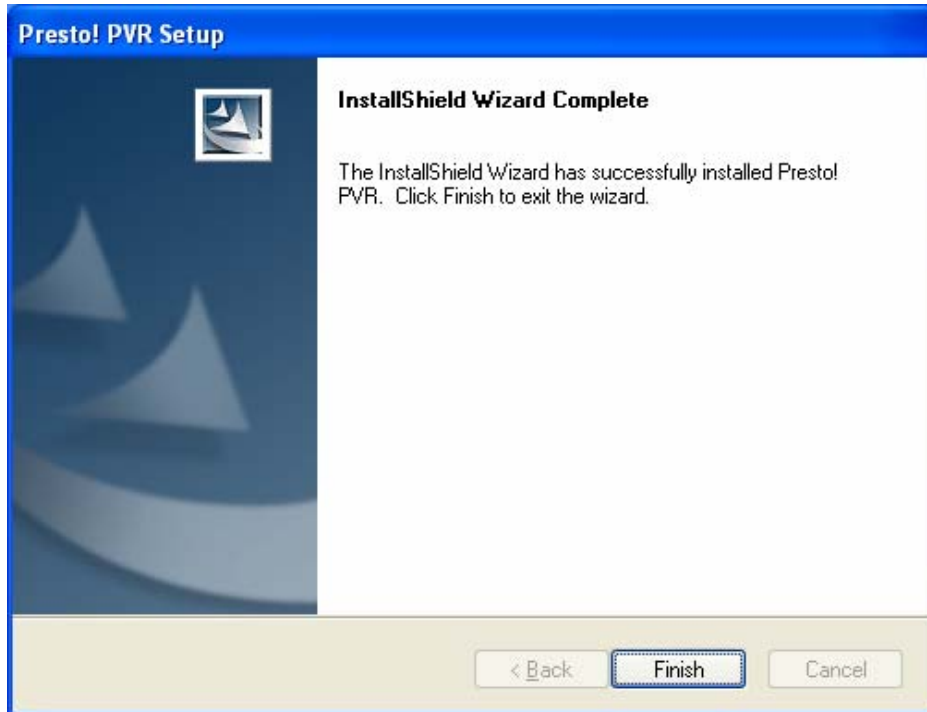
- Please click “Next”:



# USB2.0 ATSC&NTSC TV STICK USER'S MANUAL

---

- Click “Finish” button and finish the installation:



## **Notice:**

1. Without special instruction, all the following USB interfaces is meaning USB2.0 interface.
2. The driver installation takes 32bit Windows XP with English version as an example, under other operating systems, may be slightly different.